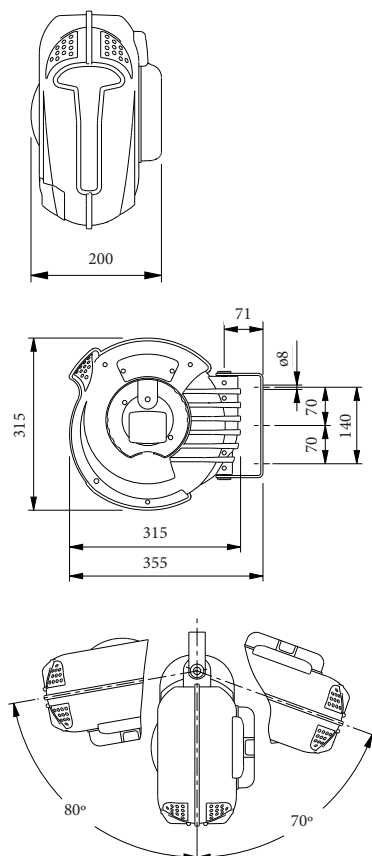


EVRP2405

Alemlube EV Hose Reel



August 2023

Step into the future, here and now with the Alemlube EVRP2405 EV Hose Reel. Electric cars are a rapidly developing reality and an electric cable without a reel is like a smartphone with no connection.

Which is why the convenient automatic spring rewind EVRP2405 EV Hose Reel available from Alemlube is the perfect accessory workshop.

The Alemlube EVRP2405 EV Hose Reel has been designed and manufactured so that the electric cable used to charge your car will always be unwound to the perfect length, thereby avoiding the annoyance of it resting on the ground, being exposed to dirt and pollutants and the potential of deterioration or damage.

Perfect for industry professionals or for private use, corporate car parks, hotel car parks or in fact any location where having an EV charging source on hand is a necessity, the Alemlube EVRP2405 EV Hose Reel is supplied with a 5m cable with type 2 power supply connectors and your choice of type 1 or type 2 vehicle connectors.

Furthermore, the exclusive Slow Motion safety system built into the Alemlube EVRP2405 EV Hose Reel that slowly retracts the cable, satisfies even the most demanding operational expectations and provides ultimate electric cable security.

SPECIFICATIONS, FEATURES AND BENEFITS

- 5m cable with type 2 power supply connectors
- Type 1 and 2 vehicle connectors supplied standard
- Circuit breaker manually restorable
- Inbuilt thermostat
- Automatic spring rewinding
- Durable plastic outer casing
- Steel swivelling wall bracket
- Ratchet stop device easily removed for inspection and removable by the end user
- Dimensions: 55cm(W) x 33cm(D) x 25cm(H)
- Weight: 4.8Kg
- CE approved & Australian standards compliant

