

BRP5216C

Caution Safety Barrier Reel



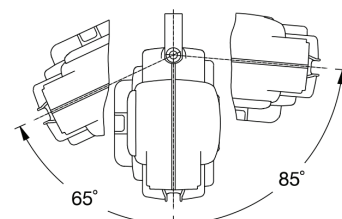
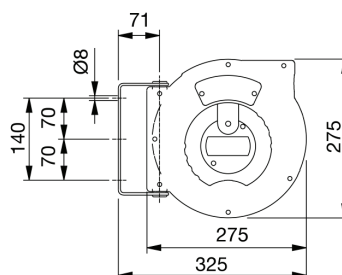
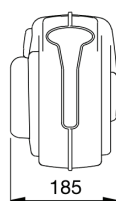
April 2021

The Alemlube BRP5216C Caution Safety Barrier Reel is an innovative storage & retrieval system containing 16 metres of yellow/black safety band designed to provide a temporary visual barrier to clearly identify hazardous or dangerous areas in the workplace and around public areas.

The durable, long lasting yellow/black safety band is complete with a circular eyelet that easily attaches to any suitable fixing point up to 16 metres from the reel.

A robust plastic outer casing contains an automatic spring rewind mechanism that efficiently rewinds the safety band for storage after use and the reel can be mounted/demounted via the integral swivelling steel wall bracket.

Always good to have on hand, the BRP5216C Caution Safety Barrier Reel available from Alemlube is a user friendly, compact design reel and a must for addressing workplace and employee safety.



SPECIFICATIONS, FEATURES AND BENEFITS

- Provides a temporary barrier to clearly identify caution areas in the workplace or public environments
- Supplied with 16m of yellow/black band with eyelet
- Automatic spring rewind mechanism
- Integral swivelling steel wall bracket
- Compact design allow mounting in most situations
- Robust plastic outer reel casing
- A must for addressing workplace and employee safety
- Weight of 3.4kg

Also available:

BRP5216D Danger Safety Barrier Reel