



# OWNER'S MANUAL

339000

## 2" 240V High Flow Diesel Transfer Pump

September 2022

### DESCRIPTION

The 339000 2" 240V High Flow Diesel Transfer Pump is a self-priming rotary type pump equipped with a by-pass, suction filter and self-ventilated motor which is flanged to the pump body.

Capable of flow rates of up to 191 L/min (with 1bar back pressure), the self-priming operation ensures reliability and continuous use even when transferring over long distances or through a hose reel.

The 339000 2" 240V High Flow Diesel Transfer Pump provides the user with dependable longevity of service when installed correctly, regularly maintained and used in accordance with the specifications contained in this manual.

Prior to installation, carefully check the contents of the packaging and thoroughly read this documentation.

Installation and pump operation must be in accordance with the safety and workplace laws of your country.

The pump must be correctly hard wired by a qualified electrician with regard to all personal safety rules and to avoid damages which may void your right to the Alemlube two-year warranty.

### PRODUCT SPECIFICATIONS

Flow Rate (1 Bar)	191 L/min
Voltage	240V 50Hz
Maximum Pressure	58psi (4 Bar)
In	2" BSP (f)
Out	2" BSP (f)
Flange In-Out	Yes
Suction	3 m
Self Priming	Automatic
Integrated filter	130um
Bleeder Valve	Included
Motion Transmission	Supported Crankshaft
Type Rotor	6 Vanes
Pump Body	Aluminium
Rotor Insert	Cast Iron
By-Pass	Included
Seal	6 Bar Mechanical NBR Seal
Anti-Flood Motor Protect	Included
Engine Rotation	1400 rpm
Power	2237 watt (3hp)
Motor Frame	100L MEC
Ampere	10.2 Amp
Noise	80 dB
Operating Temperature	-10°C to +40°C
Compatible Liquids	Diesel
Weight	38 Kg
Ingress Protection Rating	IP55



#### NSW/ACT

TEL: (02) 9677 1555  
FAX: (02) 9675 1155

#### QLD/PNG

TEL: (07) 3204 9166  
FAX: (07) 3204 1224

#### VIC/TAS

TEL: (03) 8787 8288  
FAX: (03) 8787 8266

#### WA

TEL: (08) 9302 4199  
FAX: (08) 9303 2095

#### SA/NT

TEL: (08) 8241 7111  
FAX: (08) 8241 7011

#### NZ

TEL: (09) 447 1007  
FAX: (09) 447 1008



# OWNER'S MANUAL

339000

## 2" 240V High Flow Diesel Transfer Pump

### Safety Warning and Precautions

**WARNING:** The warnings, cautions, and instructions discussed in this instruction manual cannot cover all possible conditions or situations that could occur. It must be understood by the operator that common sense and caution are factors that cannot be built into this product, but must be supplied by the operator.

1. Keep the work area clean and dry. Damp or wet work areas can result in injury.
  2. Keep children away from work area. Do not allow children to handle this product.
  3. Use the right tool for the job. Do not attempt to force small equipment to do the work of larger industrial equipment. There are certain applications for which this equipment was designed. It will do the job better and more safely at the capacity for which it was intended. Do not modify this equipment, and do not use this equipment for a purpose for which it was not intended.
  4. Check for damaged parts. Before using this product, carefully check that it will operate properly and perform its intended function. Check for damaged parts and any other conditions that may affect the operation of this product. Replace damaged or worn parts immediately.
  5. Do not overreach. Keep proper footing and balance at all times to prevent tripping, falling, back injury, etc.
  6. DO NOT use the equipment when tired or under the influence of drugs, alcohol, or medication. A moment of inattention while operating this equipment may result in serious personal injury.
- 
1. Read the following precautions and instructions before you begin assembly or using.
  2. Failure to comply with these instructions could result in personal injury or property damage. Keep these instructions in a convenient location for future reference.

**Important Note:** The guarantee will be void if the pump has been altered in any way.

### Main Components and Accessories

The main parts of the 240V Diesel Transfer Pump are:

1. Electric engine
2. Pump
3. Suction and delivery point
4. Filter

### Usage Field

The 240V Diesel Transfer Pump is not suitable for submerged usage (with the electric engine under liquid).

It is used just for suction, convey or distribution of low viscosity diesel (<5 cSt) with a flammability point non inferior to 60°C. Liquids must be not corrosive, cleaned or contain in suspension very low percentage (2.3% max.) of solid particles in order not to wear the internal surfaces of the pump.

Do not use the pump in corrosive or explosive environments (dusts and flammable vapours or other gases) as the engine is not flameproof. To avoid damages it must work in environments with the temperature not lower than 5°C and not higher than 40°C / 90% maximum humidity. The electric engine of the pump is designed for a continuous rating working (the by-pass working is allowed just for a few minutes) during which there are not any generated electromagnetic disturbances.

**WARNING:** Do not use the pump with solvents, fuels, flammable or dense liquids, corrosive fluids, water or alimentary liquids.

#### NSW/ACT

TEL: (02) 9677 1555  
FAX: (02) 9675 1155

#### QLD/PNG

TEL: (07) 3204 9166  
FAX: (07) 3204 1224

#### VIC/TAS

TEL: (03) 8787 8288  
FAX: (03) 8787 8266

#### WA

TEL: (08) 9302 4199  
FAX: (08) 9303 2095

#### SA/NT

TEL: (08) 8241 7111  
FAX: (08) 8241 7011

#### NZ

TEL: (09) 447 1007  
FAX: (09) 447 1008



# OWNER'S MANUAL

339000

## 2" 240V High Flow Diesel Transfer Pump

### Usage Restrictions

Carefully read this manual before installation of the pump.

1. Do not use the pump to draw in or pump liquids different from that mentioned in the paragraph "Usage field"
2. Before starting the transfer, check if the diesel is going to be stored in an appropriate container.
3. Pay attention not to direct the diesel to persons or things, to electric boards or electric components.
4. Position the pump always in a way that the switch can't be accidentally turned on.
5. Turn off the power supply after every usage.
6. Do not modify any part of the device in order not to compromise its functionality, the worker's safety and the guarantee validity.
7. In a case of components breaking, please be sure that the diesel would not be dispersed into the environment.
8. Reparations with replacement of components must be done just with original spare parts.
9. Because of safety reasons, the worker must check the pump each time it is used. Reparations and replacements must be done by our service centres. A direct intervention can be dangerous and void the guarantee.

**WARNING:** Turn off the power supply before any intervention on the device.  
If you have any doubts on its safety, please do not use it.

### Power Supply

According to the model of the pump there is a power supply whose value can be found in the paragraph "Technical data". Voltage may change +/- 5% its value, while the frequency may change +/- 2%.  
In each pump there is a start/stop push-button, which is on the top of the electric engine within a rugged enclosure.  
Pos. 0 = Off position (opened circuit): the pump is deactivated.

Pos. 1 = On position (closed circuit).

If the pump stops working during use, turn off the power supply before any intervention.

**WARNING:** The power supply with values different from those indicated, may cause damage to the pump.

### Choice and Connection of Feeder

1. Use feeders with minimum section 3 x 1mm<sup>2</sup>
2. Use high quality feeders like H 05 – VVF type or similar.
3. Do not damage the feeder passing over it with machines or equipment.
4. Do not position the feeder over damp surfaces or wet land.

The feeder integrity must be always checked before every usage of the pump.  
If there are abrasions or damages, please ask for authorised staff intervention.

**WARNING:** The feeder can only be changed by Alemlube or by authorised staff.

#### NSW/ACT

TEL: (02) 9677 1555  
FAX: (02) 9675 1155

#### QLD/PNG

TEL: (07) 3204 9166  
FAX: (07) 3204 1224

#### VIC/TAS

TEL: (03) 8787 8288  
FAX: (03) 8787 8266

#### WA

TEL: (08) 9302 4199  
FAX: (08) 9303 2095

#### SA/NT

TEL: (08) 8241 7111  
FAX: (08) 8241 7011

#### NZ

TEL: (09) 447 1007  
FAX: (09) 447 1008



# OWNER'S MANUAL

339000

## 2" 240V High Flow Diesel Transfer Pump

### Electric Connection

The diesel pump single phase engine is protected from surges through a thermo probe.

### Installation, Starting and Self-Priming Effect

During installation and maintenance, be sure the electrical supply is not under tension. After cleaning suction and delivery points, removing slugs, remaining threads or dust, connect tubes with the diesel pump making the installation for the first start of the machine. Do not use joints with conical thread, which can damage the thread point of the diesel pump.

Before starting, help the self-priming process by checking that the suction tube and pump are filled with diesel. Start the engine. After 30 seconds, if the priming didn't start, stop the pump and check if the suction tube has some air infiltrations. The tightening of connection points and hose clamps must be always checked. The suction tube must be rigid or spiral because, if a non-rigid one is used, it can crush itself because of depression created whilst the pump is working. If the suction is done at a depth greater than 3 meters it will be necessary to use a foot valve and/or a check valve.

During use, the pump must be close to the diesel tank oil. Best results are given by reducing pressure loss (during the suction), elbow and contraction of the tubes, using a non-minimum diameter tube and maintaining a clean suction filter. Never work the pump dry, without diesel inside the body of the pump. The diesel pump can be installed both in vertical and horizontal positions, taking care to fix it on the support plane with bolts suitable for the fixing holes present on the base of the electric engine.

**WARNING:** Check the suction tube and be sure it is free of obstructions, not crushed or bent and completely dipped into the diesel.

### Handling

1. To transport or stock a diesel pump, does not require particular cautions as its weight and dimensions are reduced.
2. The pump is pre-assembled, ready to be used and packed in a way that parts will not suffer damages during transport.
3. If after usage it is necessary to stock or transport the pump, empty the body of the pump and suction tubes.
4. During use, use safety gloves, shoes and work following all the safety rules.

### Maintenance

Working parts during the working of the pump, are pre-lubricated. Never use oils over the working parts as they can be damaged. Spare parts and accessories must be original and authorised by Alemlube in order to guarantee maximum safety of the diesel pump.

If the pump is modified without permission, Alemlube is then not liable anymore for damages caused by the pump. These pumps are designed to require the lowest maintenance, but a regular check for weak tube connections in order to avoid diesel losses and a monthly filter and pump body check are required to preserve quality and efficiency. In addition, check the feeders on a monthly basis.

If not used for a long time or stocked, please protect pump from humidity, rain and any other atmospheric event, especially the electric engine.

#### NSW/ACT

TEL: (02) 9677 1555  
FAX: (02) 9675 1155

#### QLD/PNG

TEL: (07) 3204 9166  
FAX: (07) 3204 1224

#### VIC/TAS

TEL: (03) 8787 8288  
FAX: (03) 8787 8266

#### WA

TEL: (08) 9302 4199  
FAX: (08) 9303 2095

#### SA/NT

TEL: (08) 8241 7111  
FAX: (08) 8241 7011

#### NZ

TEL: (09) 447 1007  
FAX: (09) 447 1008



# OWNER'S MANUAL

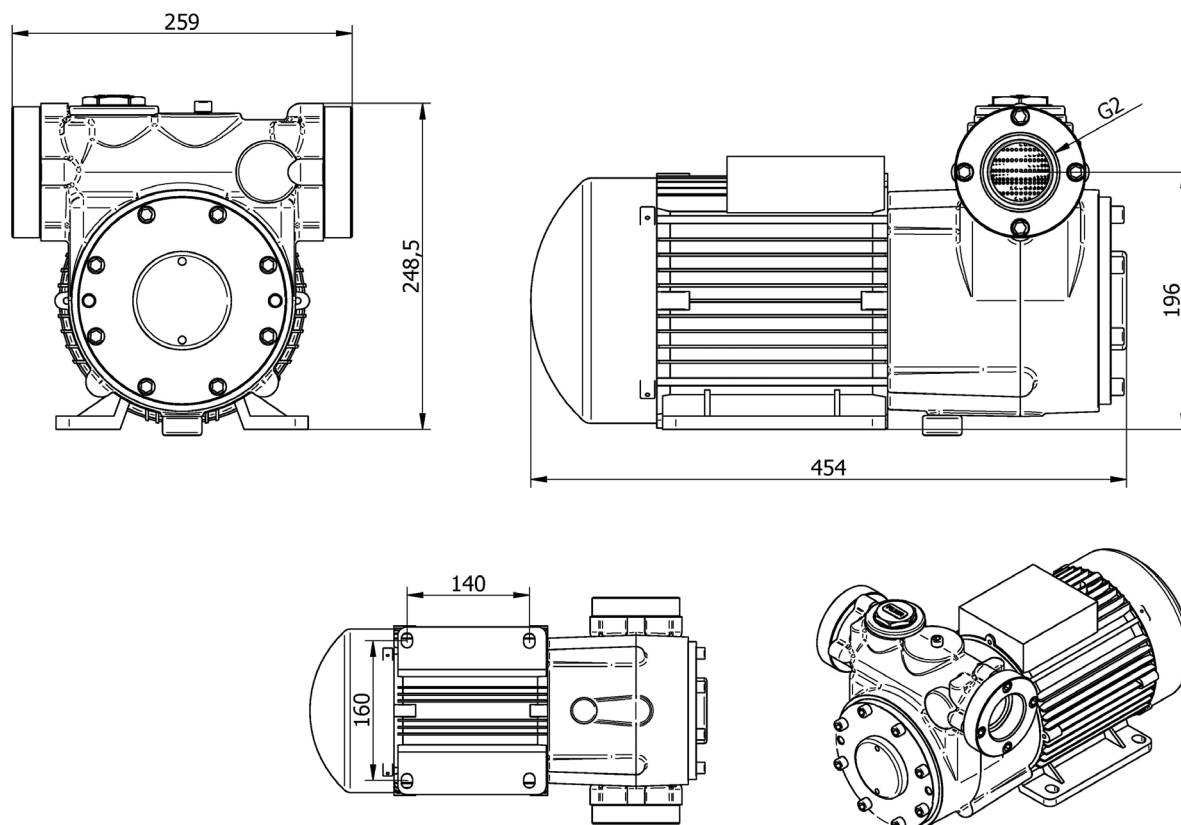
339000

## 2" 240V High Flow Diesel Transfer Pump

### TROUBLE SHOOTING

Condition	Possible Cause	Corrective Action
The engine does not work or runs very slowly	There is no voltage The rotor is locked The condenser is not efficacious Voltage drop or low rate	Check cut-outs and net voltage Remove the cover and check and/or clean the rotor Replace the component Bring the voltage to normal values
The engine works but even running there is no pumping effect or it is very low	The filter is obstructed The foot valve is obstructed The suction tube is obstructed Suction too high Presence of air during the suction Working in by-pass The by-pass valve is locked The suction tube narrows The rotor is obstructed	Clean the filter Clean or replace the valve Clean or replace the suction tube Draw up the pump to the diesel static level Check the connections tightness Reduce the charge losses of the circuit Unlock, clean or change the by-pass valve Use right tubes during depression process Clean the rotor and pump body
The thermo probe starts working	The electric engine is overheating The rotor is locked The electric engine is damaged	Check voltage and ventilation The pumped diesel is not fluid enough Unlock the rotor and clean the pump body Ask for authorised staff help
The pump body loses diesel	Seals are damaged	Replace seals

### Overall Dimensions



#### NSW/ACT

TEL: (02) 9677 1555  
FAX: (02) 9675 1155

#### QLD/PNG

TEL: (07) 3204 9166  
FAX: (07) 3204 1224

#### VIC/TAS

TEL: (03) 8787 8288  
FAX: (03) 8787 8266

#### WA

TEL: (08) 9302 4199  
FAX: (08) 9303 2095

#### SA/NT

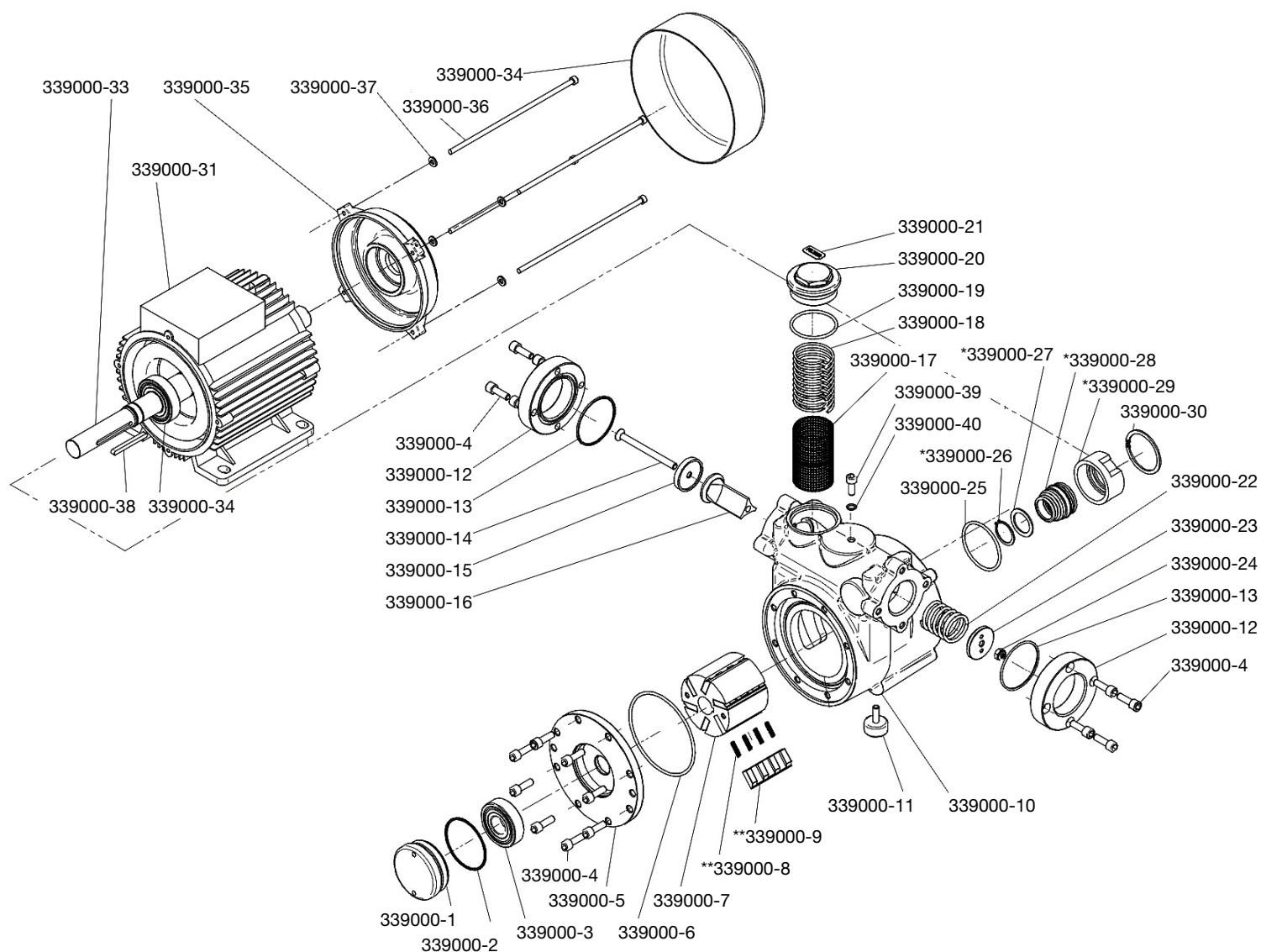
TEL: (08) 8241 7111  
FAX: (08) 8241 7011

#### NZ

TEL: (09) 447 1007  
FAX: (09) 447 1008

## Ordering Spare Parts

### Parts List – Part No. 339000



NSW/ACT

TEL: (02) 9677 1555  
FAX: (02) 9675 1155

QLD/PNG

TEL: (07) 3204 9166  
FAX: (07) 3204 1224

VIC/TAS

TEL: (03) 8787 8288  
FAX: (03) 8787 8266

WA

TEL: (08) 9302 4199  
FAX: (08) 9303 2095

SA/NT

TEL: (08) 8241 7111  
FAX: (08) 8241 7011

NZ

TEL: (09) 447 1007  
FAX: (09) 447 1008



## Ordering Spare Parts

### Parts List – Part No. 339000

Part Number	Description	Qty
339000-1	Bearing Seat Cover	1
339000-2	O-Ring	1
339000-3	Bearing	1
339000-4	Screw	16
339000-5	Pump Cover	1
339000-6	O-Ring	1
339000-7	Rotor	1
339000-8	Spring	24
339000-9	Vane	6
339000-10	Pump Body	1
339000-11	Anti-Vibration Plug	1
339000-12	Flange	2
339000-13	O-Ring	2
339000-14	Screw M8x100	1
339000-15	Washer	1
339000-16	By-Pass	1
339000-17	Network Filter	1
339000-18	Filter Support Spring	1
339000-19	O-Ring	1
339000-20	Filter Cap	1

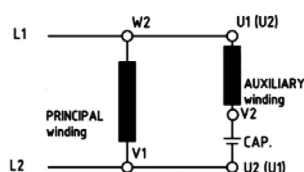
\*339000-SK Seal Kit 1

\*\*339000-VSK Vane & Seal Kit 1

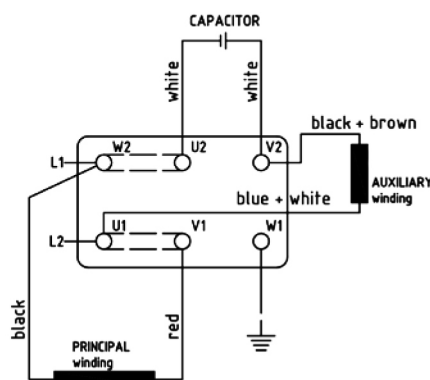
Part Number	Description	Qty
339000-21	White Filter Adhesive	1
339000-22	By-Pass Spring	1
339000-23	Washer	1
339000-24	Self-Locking Nut	1
339000-25	O-Ring	1
339000-26	Elastic Ring	1
339000-27	Washer	1
339000-28	Seal	1
339000-29	Seal Insert	1
339000-30	Elastic Ring	1
339000-31	Key	1
339000-32	Screw	1
339000-33	O-Ring	1
339000-34	Electric Engine	1
339000-35	Fan Cover	1
339000-36	Shaft	1
339000-37	Bearing	1
339000-38	Shield	1
339000-39	Screw	4
339000-40	Washer	4

single-phase motor connection circuit diagram

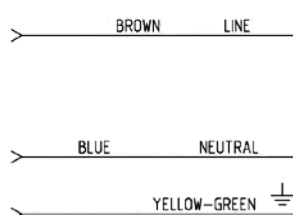
principle diagram



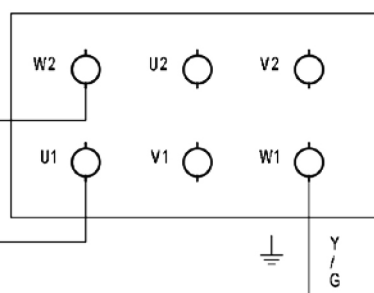
connection to the terminal board



POWER SUPPLY



TERMINAL BOX



NSW/ACT  
TEL: (02) 9677 1555  
FAX: (02) 9675 1155

QLD/PNG  
TEL: (07) 3204 9166  
FAX: (07) 3204 1224

VIC/TAS  
TEL: (03) 8787 8288  
FAX: (03) 8787 8266

WA  
TEL: (08) 9302 4199  
FAX: (08) 9303 2095

SA/NT  
TEL: (08) 8241 7111  
FAX: (08) 8241 7011

NZ  
TEL: (09) 447 1007  
FAX: (09) 447 1008