



# OWNER'S TECHNICAL MANUAL

501

## Rotary Drum Pump

June 2021

### Description

The 501 rotary drum pump is suitable for the transfer of oil and diesel from 60 and 205 litre drums and bulk tanks. The 501 comes complete with 1.05 metres of Concertina type hose, spout, spout holster and 2" BSP bung adaptor & delivers approximately 18 litres per minute or 0.26 litres per rotation when pumping diesel fuel.

### Specifications

Uses	Diesel, lube oil and machine oil
Discharge Quantity	Approximately 70 turns / 18L/min
Materials	Body hardened aluminum alloy; Handle - aluminum die cast; Seal-Buna N; Hose-Concertina type hose
Weight/Length	3.6kg/1,300mm (4.3ft)
Size	Suction Tube: 31.8mm (1¼") OD Delivery Hose: 25mm (3/4") ID x 1.05metres

### Assembly Instructions

Mount handle assembly (501A-1-2-3) to the pump body (501A-11) with the aid of locking bolt (501A-4). Screw the outlet spout (501A-12) into the outlet of the pump body (501A-11), and then screw upper suction tube (501A-20) into the inlet of pump body (501A-11).

When assembling pump & tubes, please ensure that all threads are completely airtight (use thread tape) otherwise the pump will not prime. Test prime by putting your hand over the bottom of the pump body inlet hole, turn handle in a clockwise direction. If you feel a strong suction on the palm of your hand the pump is operating correctly and is now ready to mount into the drum. If not, add a few drops of oil through the inlet hole and turn handle to lubricate internals.

When pumping fuel and the pump does not prime, lubricate pump body with some oil via the pump inlet.

### Operating Instructions

When using as a siphon pump

- 1 Turn the handle 5 or 6 times. When the liquid begins to flow from the outlet, place handle at a horizontal direction.
- 2 If the liquid stops being transferred flowing, move the handle slightly.
- 3 After use, fix the handle to the indicated point. Then the liquid inside the pump can now flow back into the drum.
- 4 Siphoning will not work when pumping liquid of a high viscosity. The pump will not siphon successfully unless all hose and pump joints are fully tightened up and all connection points are completely airtight..

### Caution

When pumping fuel, your pump must always be grounded to avoid static build up which may cause an explosion.

Do not use this pump for transferring solvents, strong alkalis or acids as the pumps seals and gaskets are incompatible with aggressive solutions.

Contact us for various chemical pump models available.



NSW/ACT  
TEL: (02) 9677 1555  
FAX: (02) 9675 1155

QLD/PNG  
TEL: (07) 3204 9166  
FAX: (07) 3204 1224

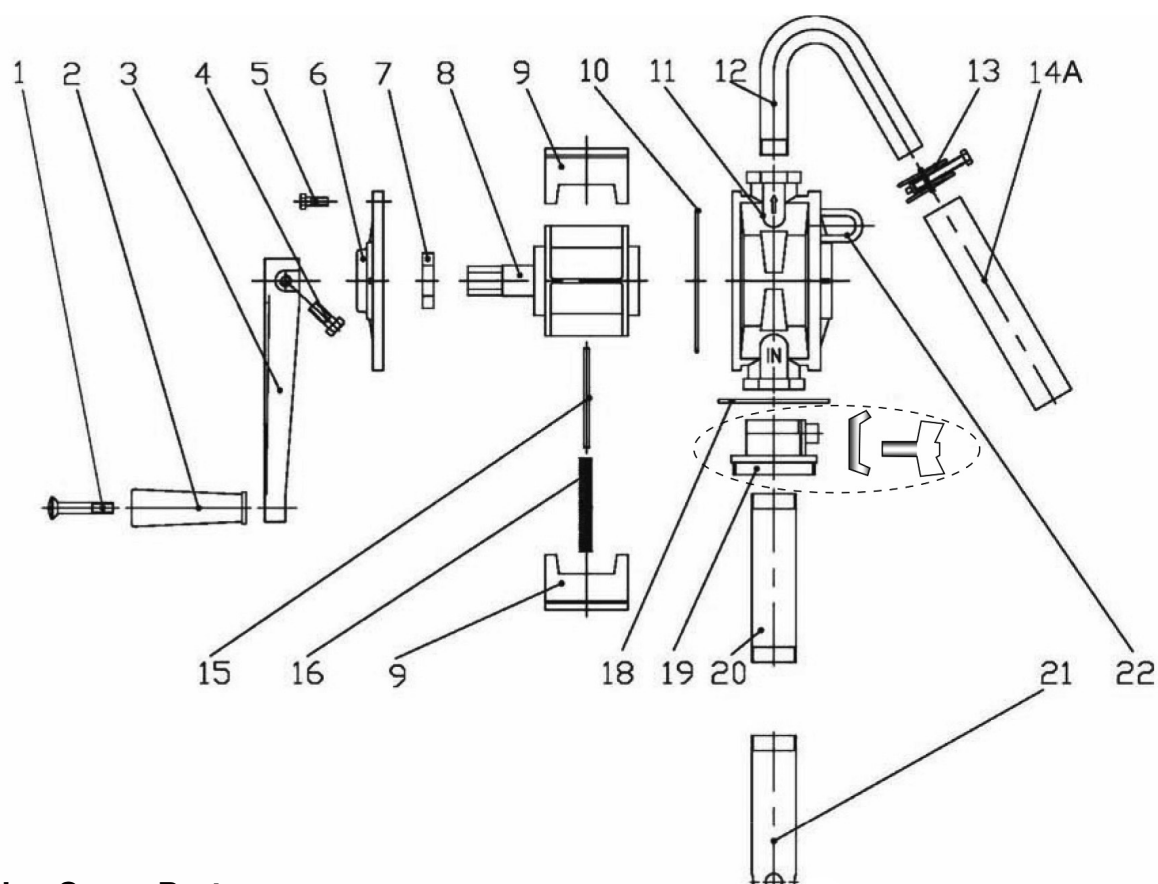
VIC/TAS  
TEL: (03) 8787 8288  
FAX: (03) 8787 8266

WA  
TEL: (08) 9302 4199  
FAX: (08) 9303 2095

SA/NT  
TEL: (08) 8241 7111  
FAX: (08) 8241 7011

NZ  
TEL: (09) 447 1007  
FAX: (09) 447 1008

# Parts And Drawing Breakdown For The 501



## Ordering Spare Parts

### Parts List – Part No. 501

ITEM	PART NO	DESCRIPTION	QTY
1	501A-1	Grip Shaft	1
2	501A-2	Handle	1
3	501A-3	Handle Shaft	1
4	501A-4	Locking Bolt	1
5	501A-5	Locking Bolt	6
6	501A-6	Pump Cover	1
7	501A-7	Oil Seal	1
8	501A-8	Rotor	1
9	501A-9	Vane	2
10	501A-10	O-Ring	1
11	501A-11	Pump Body	1

ITEM	PART NO	DESCRIPTION	QTY
12	501A-12	Outlet Spout	1
13	501A-13	Hose Clamp	1
14A	501A-14A	Concertina Type Hose	1
15	501A-15	Vane Pin	1
16	501A-16	Vane Spring	6
18	501A-18	Rubber Shroud	1
19	501A-19	Bung Adaptor	1
20	501A-20	Upper Suction Tube	1
21	501A-21	Lower Suction Tube	2
22	501A-22	Spout Holster	1

NSW/ACT  
TEL: (02) 9677 1555  
FAX: (02) 9675 1155

QLD/PNG  
TEL: (07) 3204 9166  
FAX: (07) 3204 1224

VIC/TAS  
TEL: (03) 8787 8288  
FAX: (03) 8787 8266

WA  
TEL: (08) 9302 4199  
FAX: (08) 9303 2095

SA/NT  
TEL: (08) 8241 7111  
FAX: (08) 8241 7011

NZ  
TEL: (09) 447 1007  
FAX: (09) 447 1008