



P R O D U C T

I N F O R M A T I O N

Alemlube Automotive Premium Wheel Balancer Accessories



Combination Speed Plate Pro Mounting Kit

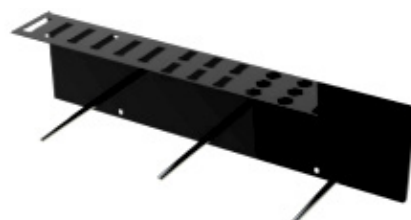
Speedplate systems eliminates wheel balancing problems with an extra tough clamping tool for steel and aluminium wheels.

3/4/5/6 Stud bolt patterns lugs for speedy balancing operations

Pulls out assemblies without scratching expensive wheels

Professional set for wheel balancers with a 40mm diameter shaft

AAP200.000.400A



Speed Plate Storage Board

Stores Speedplates wheel removers safely for long lasting usage. Saves time for faster floor-to-floor balancing operations

Can be wall mounted for easy access and safe operation

Quickly assemble kits to suit passenger, SUV and truck vehicles

Greatly assists balancing large SUV and 4WD's

AAP280.090.002A



3/6 Stud Speed Plate Mounting Kit

Speedplate systems eliminates wheel balancing problems with an extra tough clamping tool for steel and aluminium wheels.

3/6 Stud bolt patterns lugs for speedy balancing operations

Pulls out assemblies without scratching expensive wheels

For wheel balancers with a 40mm diameter shaft

AAP206.005.400A



4/8 Stud Speed Plate Mounting Kit

Speedplate systems eliminates wheel balancing problems with an extra tough clamping tool for steel and aluminium wheels.

4/8 Stud bolt patterns lugs for speedy balancing operations

Pulls out assemblies without scratching expensive wheels

For wheel balancers with a 40mm diameter shaft

AAP204.001.400A



40mm Shaft Grip Style Auto Clamp Handle

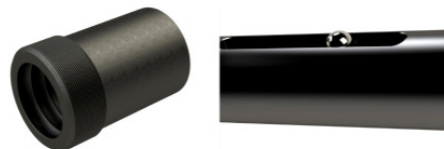
Auto clamp handle for wheel balancing operations. Speedplate systems and accessories are made extra tough, built to last.

Speedplate systems help avoid customer come-backs

Quickly assemble speed plate kits for fast and safe balancing

The easiest and most durable wheel clamping tools available

AAP280.010.818A



40mm Ball Grip Style Auto Clamp Handle

Auto clamp handle for wheel balancing operations. Speedplate systems and accessories are made extra tough, built to last.

Speedplate systems help avoid customer come-backs

Quickly assemble speed plate kits for fast and safe balancing

The easiest and most durable wheel clamping tools available

AAP280.010.589A