



EL SERIES

SERVICE INSTRUCTIONS

G10040 18V Cordless Grease Gun

Description

Model G10040 is an 18 volt battery operated, cordless grease gun suitable for 450gm grease cartridges or bulk grease filling. It comes complete with a plastic carry case, a 240v quick battery charger and a spare extra battery. Capable of developing up to 10,000psi, the G10040 can also deliver up to 80 grams of NLGI2 grease per minute. The gun comes complete with a massive 106cm long high pressure flexible extension and hydraulic coupler to grease those difficult to get to places. The G10040 can pump for up to 35 minutes or 4 x 450gm NLGI2 grease cartridges before requiring battery changeover or recharge which takes only 75 minutes. For heavy duty applications where day in day out greasing is required, the 670AN from Alemite USA is also available.

Specifications

Uses	18V Battery Operated Cordless Grease Gun - 450gm grease cartridge or bulk grease fill
Discharge Quantity	Up to 80 grams per minute of NLGI2 grease
Grease Pressure	Up to 10,000psi
Battery	1500mAh
Weight	7.9kg

Operating instructions

- 1 Before using the gun for the first time, please ensure the battery has been fully charged.

There are two ways to fill the gun with grease:

A) 450gm Grease Cartridge:

Unscrew the grease barrel from the gun and insert the 450gm grease cartridge by holding the barrel assembly & pulling the rod back. Remove both caps from the cartridge, insert the cartridge into the barrel & then rescrew the barrel assembly back onto the gun so that the cartridge sits well against the grease gun head. Once in position, press the clamp down & push the rod back into the barrel.

Important to note

When using the gun with a cartridge, the follower cup must be folded **backwards**. The gun is supplied standard with the follower cup in this position.

B) Bulk Grease Loading:

Unscrew the grease barrel from the gun & insert the barrel into the bulk grease. Suck the grease up into the barrel by pulling the rod all the way back. When barrel is full with grease, rescrew the barrel assembly back onto the gun so that the grease filter sits well against the grease. Press the clamp down & push the rod back into the barrel.

Important to note

When using the gun with bulk grease, the follower cup must be folded forward. To do this you have to take the follower cup and rod assembly out of the barrel, fold the follower cup forward and reassemble the barrel assembly.

- 2 Press the air release valve down until grease appears.
- 3 Pull the gun trigger until grease is forced out of the hydraulic coupler.



Head Office NSW
TEL: (02) 9939 0711
FAX: (02) 9939 0411

VIC
TEL: (03) 8787 8288
FAX: (03) 8787 8266

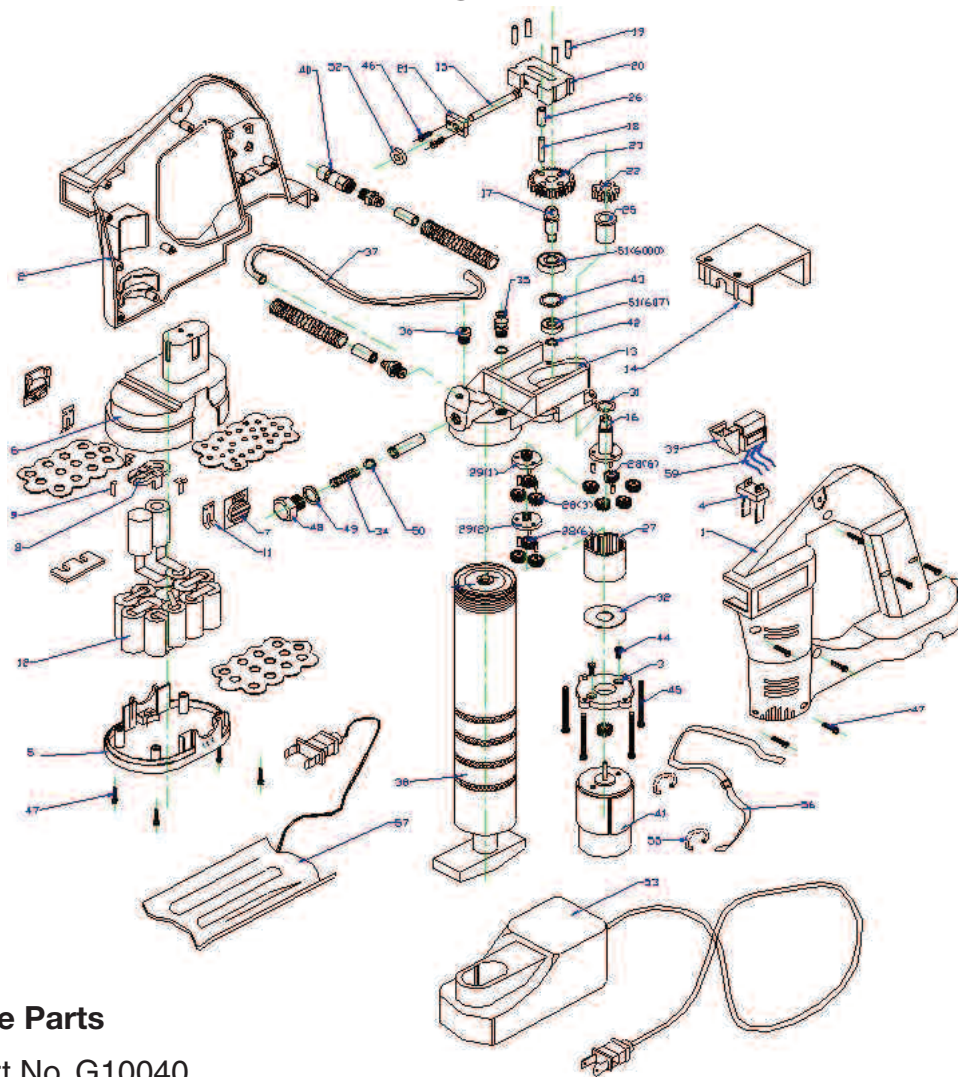
QLD
TEL: (07) 3889 8480
FAX: (07) 3889 8490

SA/NT
TEL: (08) 8241 7111
FAX: (08) 8241 7011

WA
TEL: (08) 9209 3066
FAX: (08) 9209 3933

TAS
TEL: (03) 6343 0477
FAX: (03) 6343 0911

Parts And Drawing Breakdown G10040



Ordering Spare Parts

Parts List – Part No. G10040

Item No.	Part No.	Description	Qty	Item No.	Part No.	Description	Qty
1	G10040-1	Left Cover	1	38	G10040-38	Barrel Assembly 450gm	1
2	G10040-2	Right Cover	1	39	G10040-39	Trigger Switch	1
3,13,14,16-34 42-46,48-51	G10040-PA	Pump Assembly	1	40	G10040-40	Nozzle	1
4	G10040-4	Plug	1	41	G10040-41	Motor	1
5,6	G10040-5-6	Battery Pack Cover	2	47	G10040-47	Screw	1
7-12	G10040-BA	Battery Assembly	2	53	G10040-53	Charger	1
15	G10040-15	Plunger	1	55	G10040-55	Ring	1
35	G10040-35	Vent Valve	1	56	G10040-56	Belt	1
36	G10040-36	Filler Valve	1	57	G10040-57	Electro thermal Blanket	1
37	G10040-37	Hose	1	59	G10040-59	Wire	1

Trouble Shooting

Problem	Remedy
Gun does not pump	Check that the battery is fully charged and secured correctly.
Gun motor is hot	Stop motor and give motor time to cool down. If the motor is over extended, it will burn out and the manufacturer's warranty will be voided.
Gun does not pump	If the gun is cycling but no grease is appearing from the coupler: 1. Depress the air bleeder several times. If still blocked, unscrew the flexible extension from the gun head, activate gun and wait till grease splatters out. This is the air pocket being released. 2. Unscrew barrel 1-1/2 turns from head to allow air to release and activate gun. 3. Screw the flexible extension & barrel back on firmly and continue operating as normal.

Head Office NSW
TEL: (02) 9939 0711
FAX: (02) 9939 0411

VIC
TEL: (03) 8787 8288
FAX: (03) 8787 8266

QLD
TEL: (07) 3889 8480
FAX: (07) 3889 8490

SA/NT
TEL: (08) 8241 7111
FAX: (08) 8241 7011

WA
TEL: (08) 9209 3066
FAX: (08) 9209 3933

TAS
TEL: (03) 6343 0477
FAX: (03) 6343 0911